

CABLE OPERATED BAR SCREEN

Cable operated bar screen is a mechanically cleaned screen which is installed in the inlet works of treatment plants, pumping stations and water inlet structures to capture solid materials which otherwise would be harmful to following processes and to the downstream equipment. Cable operated bar screen is especially preferred for deep channels because of its right angle installation. So that minimizes construction requirements and associated costs.

Cable operated bar screen consists of following main parts;

Screen frame

It is the main structure of screen and it is made of standard sectional or folded steel plates bent in U shape. The whole framework can be fabricated of mild steel with epoxy coating or hot dip galvanized or in stainless steel upon request.

Screen bars

Screen bars are manufactured from standard bars and bolted to frame. They are designed with rectangular or trapezoidal section depending on application. Carbon steel and stainless steel material alternatives are available.

Dead plate

It is formed by steel or stainless steel sheet and fixed to upper main body by bolts. It is connected to discharge chute by welding.

Discharge chute

This part helps captured screenings to drop in to a conveyor or a container. It is made of steel or stainless steel sheet and fixed to the dead plate by welding.

Rake

Rake is designed to have a form as a scoop and is fabricated of welded, folded steel sections and plates in carbon steel or stainless steel. Rake edges are manufactured from PE to prevent friction between two metal parts. The PE part is mounted to rake via bolts, so it can be replaced when the part is damaged.

Wiper

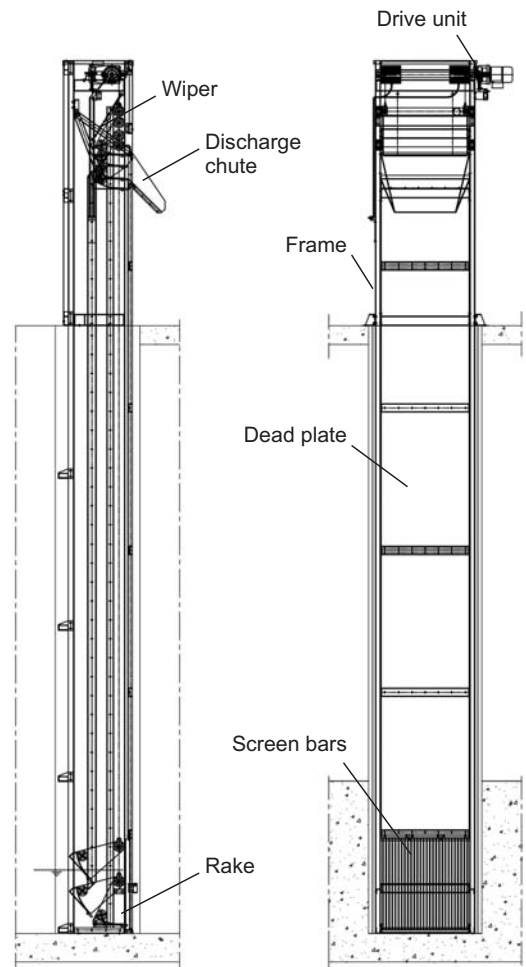
It is designed to clean the rake when discharging debris to the chute. It is manufactured from steel or stainless steel, have PE edge same as rake. The PE edge can be replaced when damaged.

Rope

It is provided in stainless steel or galvanized steel material and connected to the drum on the drive unit. The lifting and lowering motion of the rake is provided by the winding and unwinding of the cable to the drum.

Drive unit

Drive system is consisting of a motor which has IP 55 class protection as standard and a gearbox to reduce motor output speed and supply suitable traveling speed for rake system. It is mounted to drive shaft directly.



Design data:

Screen channel width	: 600 - 3000 mm
Screen channel depth	: up to 20 m
Discharge height	: 800 mm - 2800 mm
Bar extension	: 200 mm
(From max. water level)	
Screen opening	: 15 - 100 mm
Installation angle	: 90 degree
Rake travel speed	: 6 - 12 m/min

Accessories:

- Torque switch
- Limit switch

Optional accessories:

- Ultrasonic differential level measurement system
- Local control panel
- Cover

MAN 2030 06.09-E



CABLE OPERATED BAR SCREEN



MASS ARITMA SİSTEMLERİ İNŞAAT SANAYİ VE TİCARET A. Ş.

Gebze Organize Sanayi Bölgesi, 700. Sok., Gebze 41480 Kocaeli - Türkiye

Phone: +90 (262) 751 2210 pbx Fax: +90 (262) 751 0730 e-mail: info@massaritma.com <http://www.massaritma.com>